

## 5500-32 Image Tables

### 1. Securit 5500 and picture tables

Securit 5500 software is the leading ODBC package in the Securit World catalogue. It is designed to connect to an existing ODBC compliant database, thereby removing the requirement for separate databases for ID production.

The existing database will need some minor modifications before a successful 5500-32 project can be created.

1. The main table where the data is stored will need to have a field added – called TAG and numeric in data type.
2. A picture table will need to be created to store images. This is performed as OLE Objects.

### 2. The structure of the picture table

The picture table structure needs to be in a certain format, and any deviations will cause the software to fail. Below are the table structures for Access, SQL and Oracle.

#### 2.1 Microsoft SQL

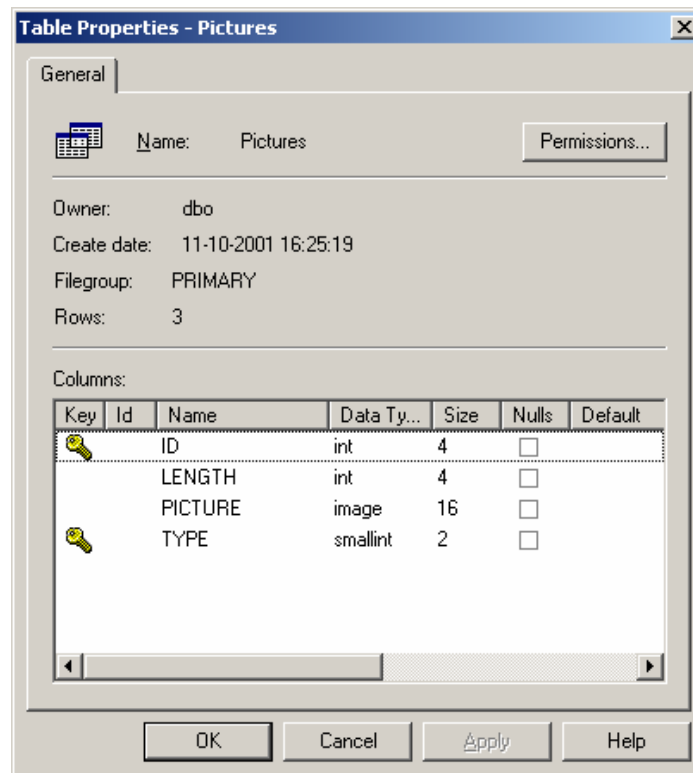
##### SQL script

```
if exists (select * from dbo.sysobjects where id = object_id(N'[dbo].[Picture]') and
OBJECTPROPERTY(id, N'IsUserTable') = 1)
drop table [dbo].[Picture]
GO
```

```
CREATE TABLE [dbo].[Pictures] (
    [ID] [int] NOT NULL ,
    [LENGTH] [int] NOT NULL ,
    [PICTURE] [image] NOT NULL ,
    [TYPE] [smallint] NOT NULL
) ON [PRIMARY] TEXTIMAGE_ON [PRIMARY]
GO
```

```
ALTER TABLE [dbo].[Picture] WITH NOCHECK ADD
    CONSTRAINT [PK_Picture] PRIMARY KEY CLUSTERED
    (
        [ID],
        [TYPE]
    ) ON [PRIMARY]
GO
```

## SQL table structure



## 2.2 MS Access

### Access script

```

CREATE TABLE PICTURES
(
  IDNUMBER LONG,
  LENGTH LONG,
  PICTURE OLEOBJECT,
  TYPE BYTE
);

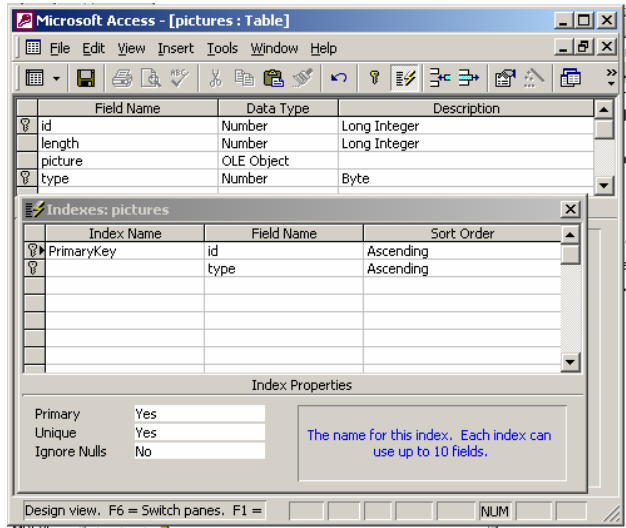
```

```

CREATE UNIQUE INDEX ID_TYPE_PK_PICTURES ON PICTURES (IDNUMBER,TYPE);

```

**Access table Structure**



**2.2 Oracle**

**Oracle script**

CREATE TABLE PICTURES

```
(
  ID NUMBER(10),
  LENGTH NUMBER(10),
  PICTURE LONG RAW,
  TYPE NUMBER(2)
);
```

CREATE UNIQUE INDEX ID\_TYPE\_IDX\_PICTURES ON PICTURES (ID,TYPE);

**Oracle table Structure**

Name	Datatype	Length	Precision	Nulls?	Default
ID	NUMBER	10	0	✓	
LENGTH	NUMBER	10	0	✓	
PICTURE	LONG RAW			✓	
TYPE	NUMBER	2	0	✓	
				✗	